

07.111

07.111

5782



5782

Pratiti Samudra

Handwritten text in Balinese script on the left side of the palm leaf manuscript.

Handwritten text in Balinese script on the right side of the palm leaf manuscript.

10

...
...
...
...

●

...
...
...
...

...
...
...
...

●

...
...
...
...

22

Handwritten text in Balinese script on the left side of the top palm leaf.

Small circular mark or symbol on the top palm leaf.

Handwritten text in Balinese script on the right side of the top palm leaf.

Handwritten text in Balinese script on the left side of the bottom palm leaf.

Small circular mark or symbol on the bottom palm leaf.

Handwritten text in Balinese script on the right side of the bottom palm leaf.

...
...
...
...

...
...
...
...

...
...
...
...

...
...
...
...

Handwritten text on the top left palm leaf, consisting of approximately 12 lines of script.



Handwritten text on the top right palm leaf, consisting of approximately 12 lines of script.

Handwritten text on the bottom left palm leaf, consisting of approximately 12 lines of script.



Handwritten text on the bottom right palm leaf, consisting of approximately 12 lines of script.

Handwritten text on the top left palm leaf, consisting of approximately four lines of script.

Handwritten text on the top right palm leaf, consisting of approximately four lines of script.

Handwritten text on the bottom left palm leaf, consisting of approximately four lines of script.

Handwritten text on the bottom right palm leaf, consisting of approximately four lines of script.

Handwritten text in Balinese script on the top left palm leaf, consisting of approximately 10 lines of text.

Handwritten text in Balinese script on the top right palm leaf, consisting of approximately 10 lines of text.

Handwritten text in Balinese script on the bottom left palm leaf, consisting of approximately 10 lines of text.

Handwritten text in Balinese script on the bottom right palm leaf, consisting of approximately 10 lines of text.

Handwritten text in Balinese script on the top left palm leaf, consisting of approximately four lines of characters.

Handwritten text in Balinese script on the top right palm leaf, consisting of approximately four lines of characters.

Handwritten text in Balinese script on the bottom left palm leaf, consisting of approximately four lines of characters.

Handwritten text in Balinese script on the bottom right palm leaf, consisting of approximately four lines of characters.

1007

Handwritten text in Balinese script on the top left of the first palm leaf.

Decorative circular symbol.

Handwritten text in Balinese script on the top right of the first palm leaf.

Handwritten text in Balinese script on the bottom left of the second palm leaf.

Decorative circular symbol.

Handwritten text in Balinese script on the bottom right of the second palm leaf.

Handwritten text in Balinese script on the top left palm leaf, consisting of approximately four lines of text.

Handwritten text in Balinese script on the top right palm leaf, consisting of approximately four lines of text.

Handwritten text in Balinese script on the bottom left palm leaf, consisting of approximately four lines of text.

Handwritten text in Balinese script on the bottom right palm leaf, consisting of approximately four lines of text.

100

Handwritten text in Balinese script on the top left palm leaf.

o

Handwritten text in Balinese script on the top right palm leaf.

Handwritten text in Balinese script on the bottom left palm leaf.

o

Handwritten text in Balinese script on the bottom right palm leaf.

102

Handwritten text in Balinese script on the left side of the top palm leaf.

Handwritten text in Balinese script on the right side of the top palm leaf, including a circular symbol.

Handwritten text in Balinese script on the left side of the bottom palm leaf.

Handwritten text in Balinese script on the right side of the bottom palm leaf, including a circular symbol.

1000

Handwritten text in Balinese script on the top left palm leaf.

①

Handwritten text in Balinese script on the top right palm leaf.

Handwritten text in Balinese script on the bottom left palm leaf.

①

Handwritten text in Balinese script on the bottom right palm leaf.

Handwritten text in Balinese script on the top left palm leaf, consisting of approximately four lines of characters.

Handwritten text in Balinese script on the top right palm leaf, consisting of approximately four lines of characters.

Handwritten text in Balinese script on the bottom left palm leaf, consisting of approximately four lines of characters.

Handwritten text in Balinese script on the bottom right palm leaf, consisting of approximately four lines of characters.

100

Handwritten text in Balinese script on the top left palm leaf.

Handwritten text in Balinese script on the top right palm leaf.

Handwritten text in Balinese script on the bottom left palm leaf.

Handwritten text in Balinese script on the bottom right palm leaf.

Handwritten text on the top left palm leaf, consisting of approximately 10 lines of script.

Handwritten text on the top right palm leaf, consisting of approximately 10 lines of script.

Handwritten text on the bottom left palm leaf, consisting of approximately 10 lines of script.

Handwritten text on the bottom right palm leaf, consisting of approximately 10 lines of script.

Handwritten text on the left side of the top palm leaf, including a circular symbol.

Handwritten text on the right side of the top palm leaf.

Handwritten text on the left side of the bottom palm leaf, including a circular symbol.

Handwritten text on the right side of the bottom palm leaf.

1307

Handwritten text in Balinese script on the top left palm leaf.

○

Handwritten text in Balinese script on the top right palm leaf.

Handwritten text in Balinese script on the bottom left palm leaf.

●

Handwritten text in Balinese script on the bottom right palm leaf.

Handwritten text in Balinese script on the top left palm leaf, consisting of approximately four lines of characters.

Handwritten text in Balinese script on the top right palm leaf, consisting of approximately four lines of characters.

Handwritten text in Balinese script on the bottom left palm leaf, consisting of approximately four lines of characters.

Handwritten text in Balinese script on the bottom right palm leaf, consisting of approximately four lines of characters.

1887

Handwritten text in Balinese script on the top left strip.

①

Handwritten text in Balinese script on the top right strip.

Handwritten text in Balinese script on the bottom left strip.

②

Handwritten text in Balinese script on the bottom right strip.

772

Handwritten text in Balinese script on the top left palm leaf.

⊙

Handwritten text in Balinese script on the top right palm leaf.

Handwritten text in Balinese script on the bottom left palm leaf.

⊙

Handwritten text in Balinese script on the bottom right palm leaf.

100

Handwritten text in Balinese script on the top strip of a palm leaf manuscript. The text is arranged in approximately four horizontal lines.

○

Handwritten text in Balinese script on the top strip of a palm leaf manuscript, continuing from the previous strip. The text is arranged in approximately four horizontal lines.

○

301

Handwritten Balinese script on the top left of the first palm leaf.

Small circular symbol on the first palm leaf.

Handwritten Balinese script on the top right of the first palm leaf.

Handwritten Balinese script on the top left of the second palm leaf.

Handwritten Balinese script on the bottom left of the second palm leaf.

Small circular symbol on the second palm leaf.

Handwritten Balinese script on the bottom right of the second palm leaf.

100

Handwritten Balinese script on the top left palm leaf, consisting of approximately 10 lines of text.

⊙

Handwritten Balinese script on the top right palm leaf, consisting of approximately 10 lines of text.

Handwritten Balinese script on the bottom left palm leaf, consisting of approximately 10 lines of text.

⊙

Handwritten Balinese script on the bottom right palm leaf, consisting of approximately 10 lines of text.

10

Handwritten text in Balinese script on the top left strip.

11

Handwritten text in Balinese script on the top right strip.

Handwritten text in Balinese script on the bottom left strip.

12

Handwritten text in Balinese script on the bottom right strip.

Handwritten text in Balinese script on the top left palm leaf, consisting of approximately four lines of characters.

Handwritten text in Balinese script on the top right palm leaf, consisting of approximately four lines of characters.

Handwritten text in Balinese script on the bottom left palm leaf, consisting of approximately four lines of characters.

Handwritten text in Balinese script on the bottom right palm leaf, consisting of approximately four lines of characters.

Handwritten text in Balinese script on a palm leaf, consisting of approximately four lines of characters.



Handwritten text in Balinese script on a palm leaf, consisting of approximately four lines of characters.

Handwritten text in Balinese script on a palm leaf, consisting of approximately four lines of characters.



Handwritten text in Balinese script on a palm leaf, consisting of approximately four lines of characters.

Handwritten text in Balinese script on the top left palm leaf, consisting of approximately 10 lines of characters.

Handwritten text in Balinese script on the top right palm leaf, consisting of approximately 10 lines of characters.

Handwritten text in Balinese script on the bottom left palm leaf, consisting of approximately 10 lines of characters.

Handwritten text in Balinese script on the bottom right palm leaf, consisting of approximately 10 lines of characters.

Handwritten mark or symbol on the left side of the top palm leaf.

Handwritten text on the top left palm leaf, consisting of approximately 12 characters in a traditional script.

Small circular mark or symbol on the top palm leaf.

Handwritten text on the top right palm leaf, consisting of approximately 12 characters in a traditional script.

Handwritten text on the bottom left palm leaf, consisting of approximately 12 characters in a traditional script.

Small circular mark or symbol on the bottom palm leaf.

Handwritten text on the bottom right palm leaf, consisting of approximately 12 characters in a traditional script.

27

Handwritten text in Balinese script on the left side of the top palm leaf.



Handwritten text in Balinese script on the right side of the top palm leaf.

Handwritten text in Balinese script on the left side of the bottom palm leaf.



Handwritten text in Balinese script on the right side of the bottom palm leaf.

77

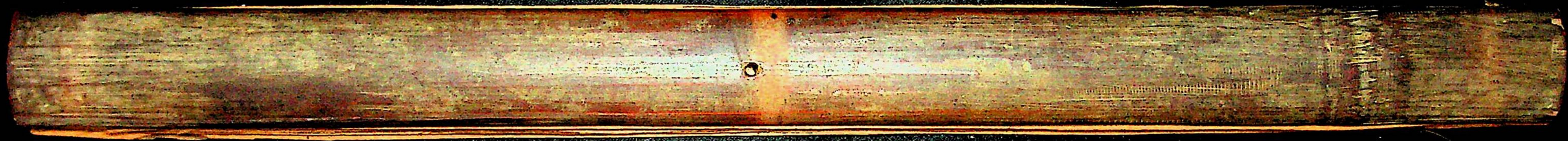
Handwritten text in Balinese script on the left side of the palm leaf manuscript.



Handwritten text in Balinese script on the right side of the palm leaf manuscript.



5782



Digitalisasi Museum Bali